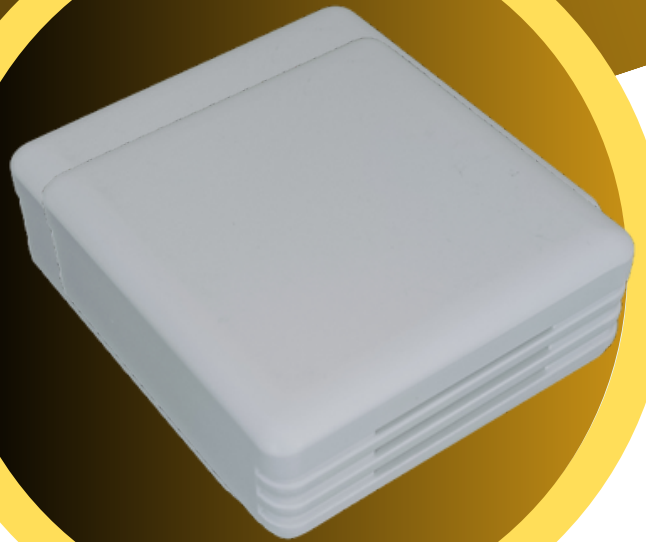


# En-Smart Sense

## ROOM TEMPERATURE AND RH TRANSMITTER

Elevating Climate Control and Monitoring



### KEY FEATURES

- **Accurate Measurements:** High-precision sensors for temperature and relative humidity provide reliable data.
- **Versatile Design:** Suitable for a variety of duct-mounted applications in HVAC systems, cleanrooms, laboratories, and more.
- **Analog and Digital Outputs:** Multiple output options for seamless integration into your control systems.
- **Wide Operating Range:** Designed to handle a broad range of temperature and humidity conditions.
- **Durable Construction:** Robust build to withstand challenging environmental conditions.

### CONTACT

Ph: +91 9941042612  
Email: [kl@emsi.co.in](mailto:kl@emsi.co.in)



# PRODUCT SPECIFICATIONS

## TEMPERATURE SENSOR

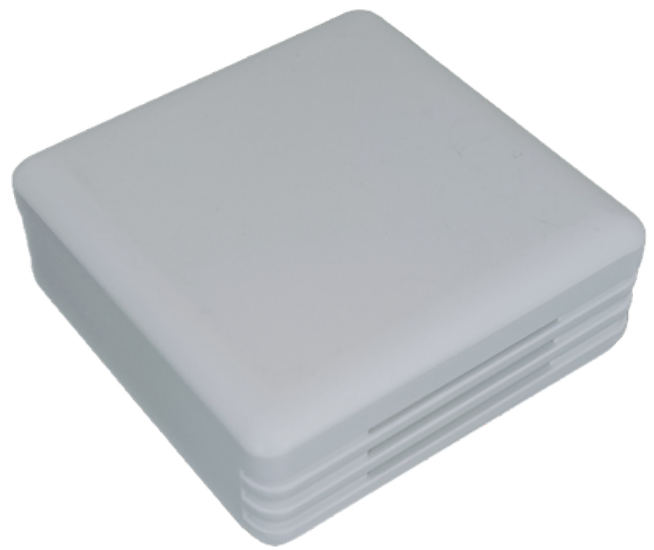
**Measurement Range:** -40°C to 85°C / 0 to 60°C

**Accuracy:** ±0.3°C

## RELATIVE HUMIDITY SENSOR

**Measurement Range:** 0% to 100% RH

**Accuracy:** ±2%RH



## OUTPUT

**Sensor Output:** 0 to 10V DC / 4 to 20 MA / ModbusRS485 / Modbus IP (POE)

## APPLICATION

Our Room Temperature and RH Transmitter is suitable for a wide range of applications, including:

- HVAC Systems
- Cleanrooms
- Laboratories
- Manufacturing
- Food Processing
- Museums and Archives



## CONTACT

**Ph:** +91 9941042612

**Email:** [kl@emsi.co.in](mailto:kl@emsi.co.in)



# WHY CHOOSE US ?

## EXCEPTIONAL QUALITY

Our transmitters are built to last and provide accurate data consistently.

## CUSTOMIZATION

**Measurement Range:** We offer options for customization to meet your specific requirements.

## TECHNICAL SUPPORT

**Sensor Output:** 0 to 10V DC / 4 to 20 MA / ModbusRS485 / Modbus TCP(POE) Our team is available to assist you with installation, calibration, and ongoing support.

## CERTIFICATION

- CE
- The National Accreditation Board for Testing and Calibration Laboratories (NABL, Govt. of India)

## COMPETITIVE PRICING

Quality doesn't have to come at a premium price. We offer cost-effective solutions.

## MODEL

### EN\_RSTT\_XX

- V [0 to 10VDC]
- A [4 to 20MA]
- M [Modbus-RS485]
- VD [0 to 10 VDC]
- AD [4 to 20 MA]
- MD IP [Modbus TCP]



## OUR LOCATION

**Head Office:**  
EnSmart Controls,  
GF-52,  
Tidelpark coimbatore limited,  
ELCO SEZ, Civil Aerodrome post,  
Vilankurichi road,  
Coimbatore - 641014.  
Tamil Nadu, India



## CONTACT

**Ph:** +91 9941042612  
**Email:** kln@emsi.co.in

### Testing and Assembly Unit

EnSmart Controls,  
417, Thendral Nagar,  
Near Jeeva Shed, Anthiyur,  
Erode-638501

